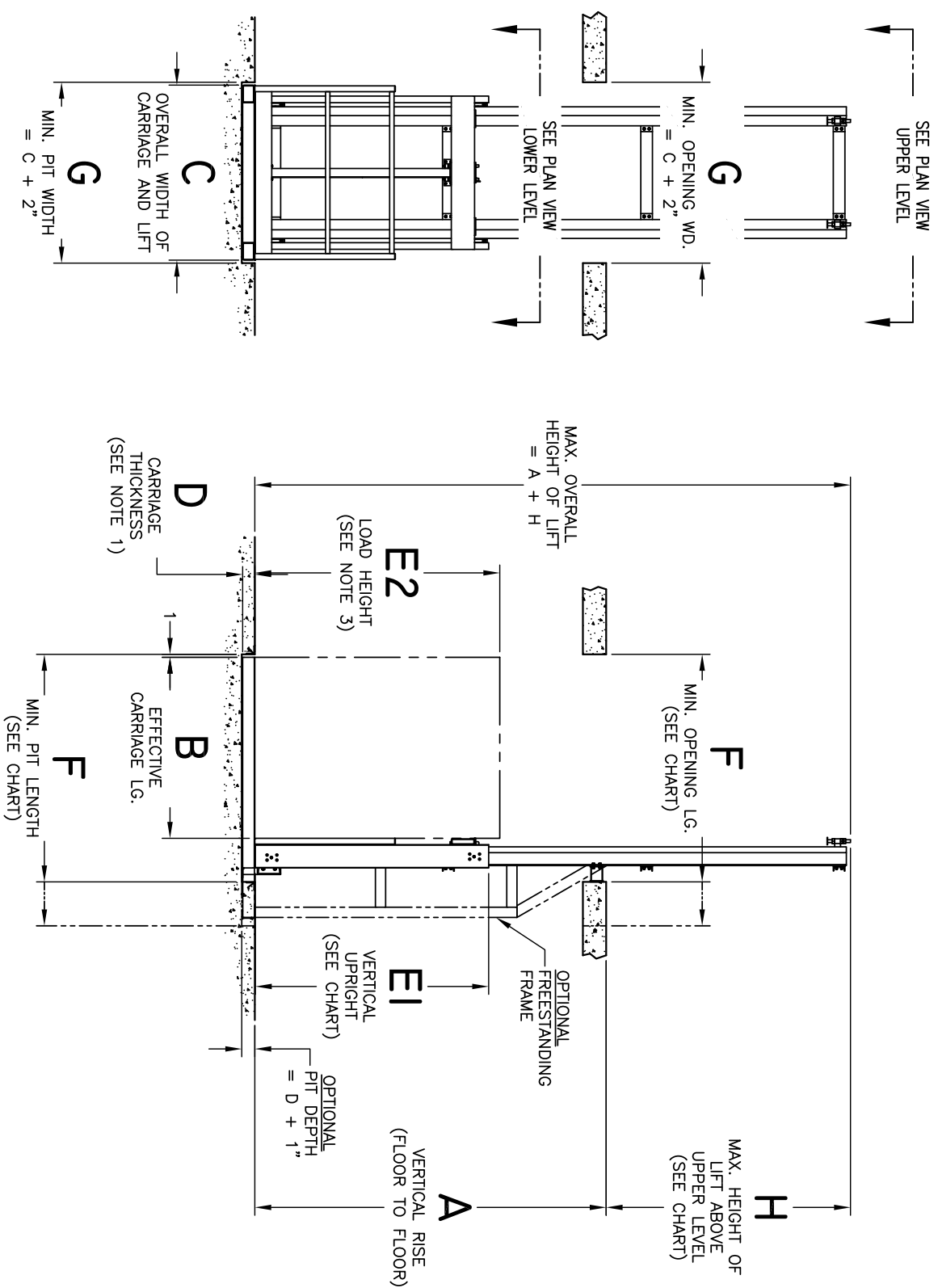


	VERTICAL RISE UP TO 10'	VERTICAL RISE 10'-1" TO 14'
E1	6'-8"	8'-8"
F	B + 16"	B + 16"
w/FREESTANDING OPTION	B + 30"	B + 30"
H	7'-0"	9'-0"



DIMENSIONS

Proper installation and satisfactory operation of a standard WILDECK lift requires eight dimensions. The required dimensions are listed in the following chart.

A	Vertical Rise	_____
B	Carrige Length	_____
C	Carrige Width	_____
D	Carrige Thickness	_____
E2	Load Height	_____
F	Upper Level Opening (length)	_____
G	Upper Level Opening (width)	_____
H	Max. Height Above Upper Level	_____

NOTES

1. All carriges are 4 1/4" thick.
2. If ramp is not used, a pit can be provided. For a 4 1/4" thick carrige, a 5" pit is required.
3. The load height is not relevant to the overall height of this unit.

CONCEPTUAL DRAWING
per Quote # _____

WILDECK, INC. RESERVES PROPRIETARY RIGHTS TO THIS DRAWING AND DATA SHOWN THEREON. SAID DRAWING AND/OR DATA ARE CONFIDENTIAL AND ARE NOT TO BE USED OR REPRODUCED FOR ANY PURPOSE WITHOUT THE WRITTEN CONSENT OF WILDECK, INC.

THIS DRAWING IS CONCEPTUAL ONLY
Not to be Used for Installation or Construction.

NO.	DATE	DESCRIPTION	BY
WILDECK, INC. 405 COMMERCE ST. WAUKESHA, WI 53186 (800) 325-6939 (262) 549-4000 WILDECK.COM			
VERTICAL RECIPROCATING CONVEYOR HYDRAULIC CANTILEVER			
MODEL NUMBER:	DWG No.		REV
DIMENSIONAL INFORMATION	V-Lift INFO		0